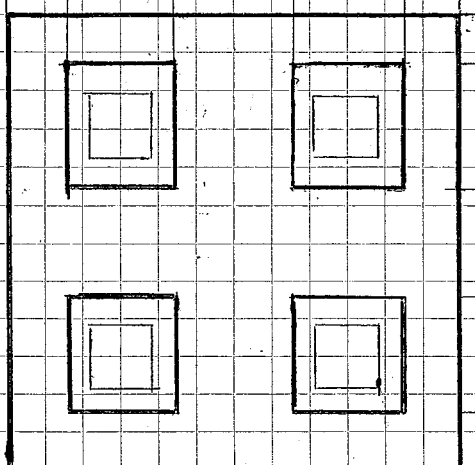
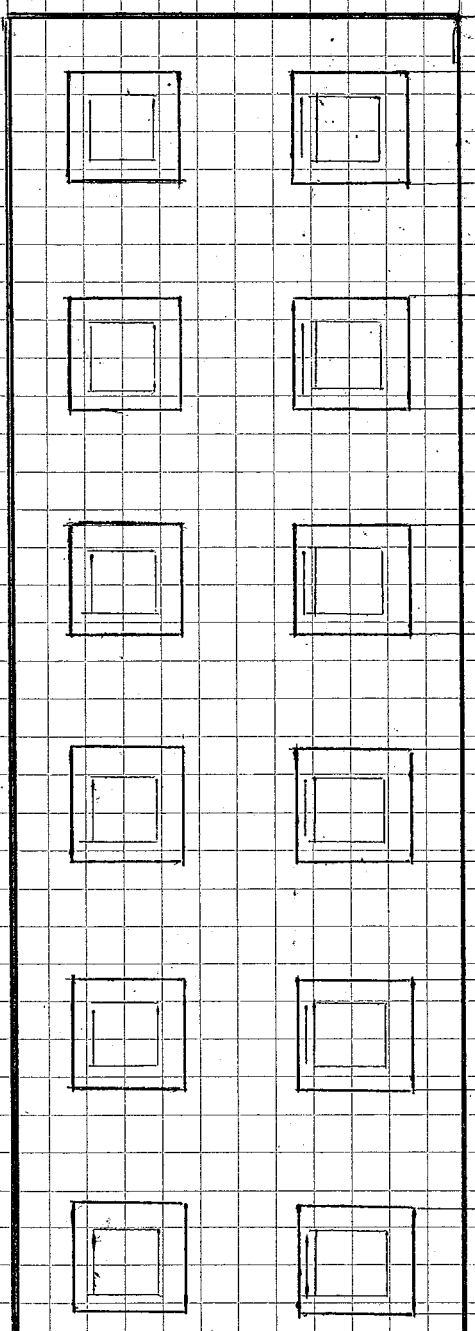


600
75, 150, 150, 150, 75

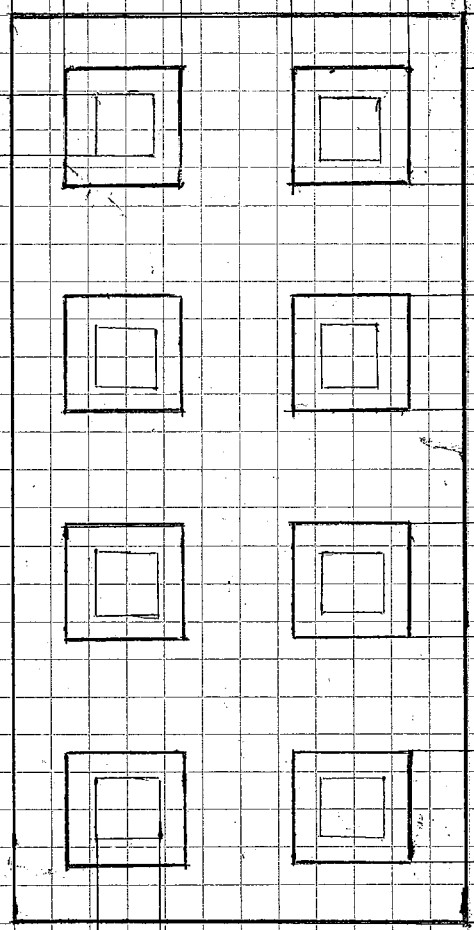


600
75, 150, 150, 150, 75

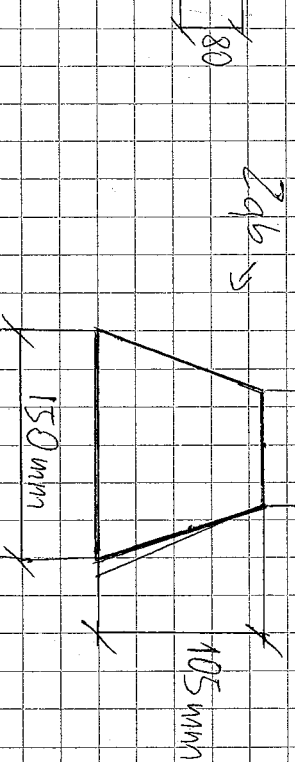


1800
75, 150, 150, 150, 150, 150, 150, 150, 150, 150, 75

600
75, 150, 150, 150, 75



1200
75, 150, 150, 150, 150, 150, 75



Dopuszczal sie tolerancje do wykonania
zamieszczonych na rys. 5/1-3 mm
Wysokosc blokow $h = 600 \text{ mm}$
Bloki musza byc ze soba kompatybilne