

1 Dokumentacja fotograficzna wymiany armatury, urządzeń i części instalacji  
w kotłowni Szkoły Policji w Katowicach





2

RELACIONALDIP  
MÓDULO 100

ASSISTENTE TÉCNICO

TESTE ENERGIA Q1.1

HONELL-SERVIS

A hand is shown pressing a button on a control panel. The panel features two digital displays, several rotary switches, and a central button. The panel is mounted on a larger grey enclosure.

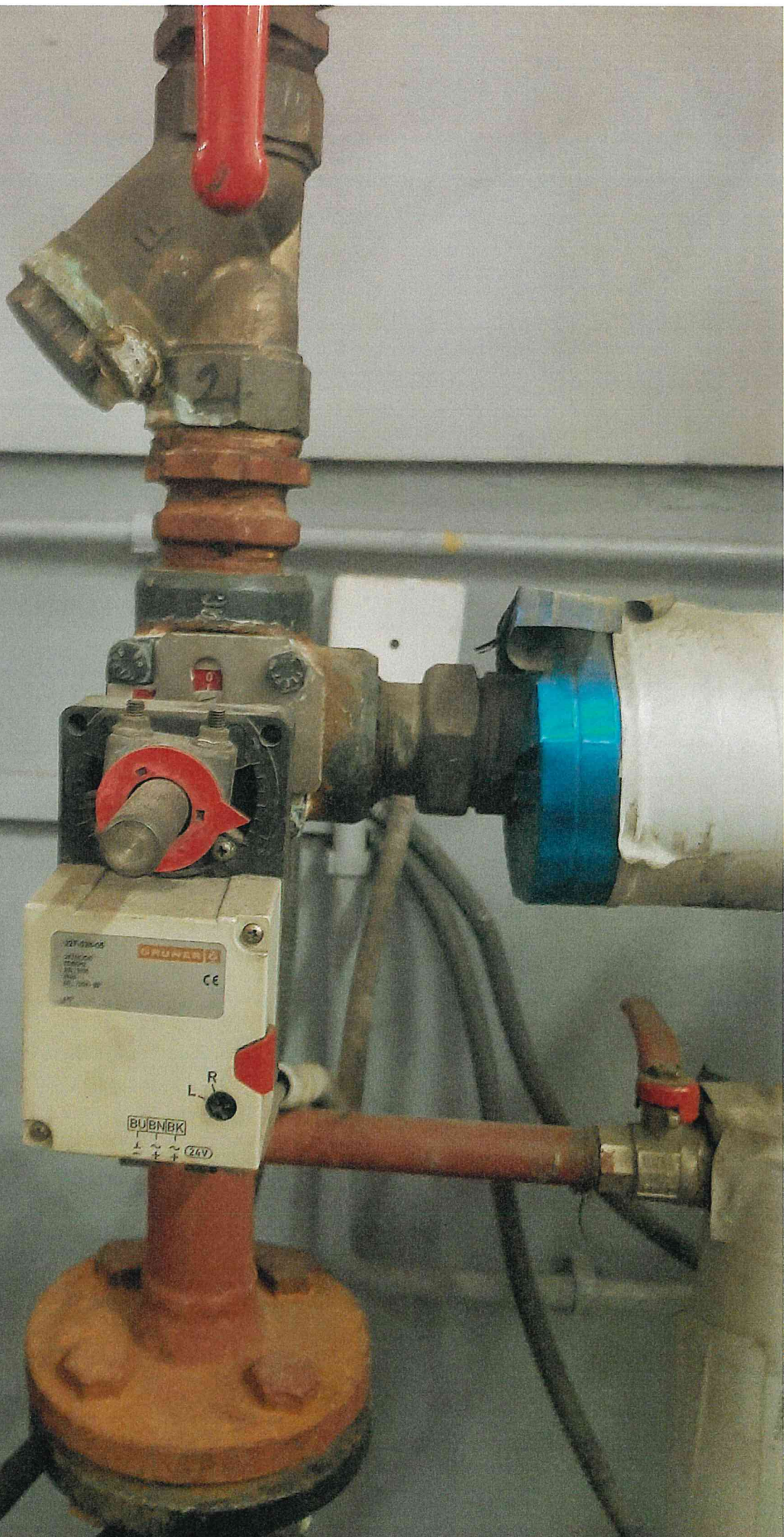
ASSISTENTE TÉCNICO

ASSISTENTE TÉCNICO

ASSISTENTE TÉCNICO



3



21

GRUNER 2

CE

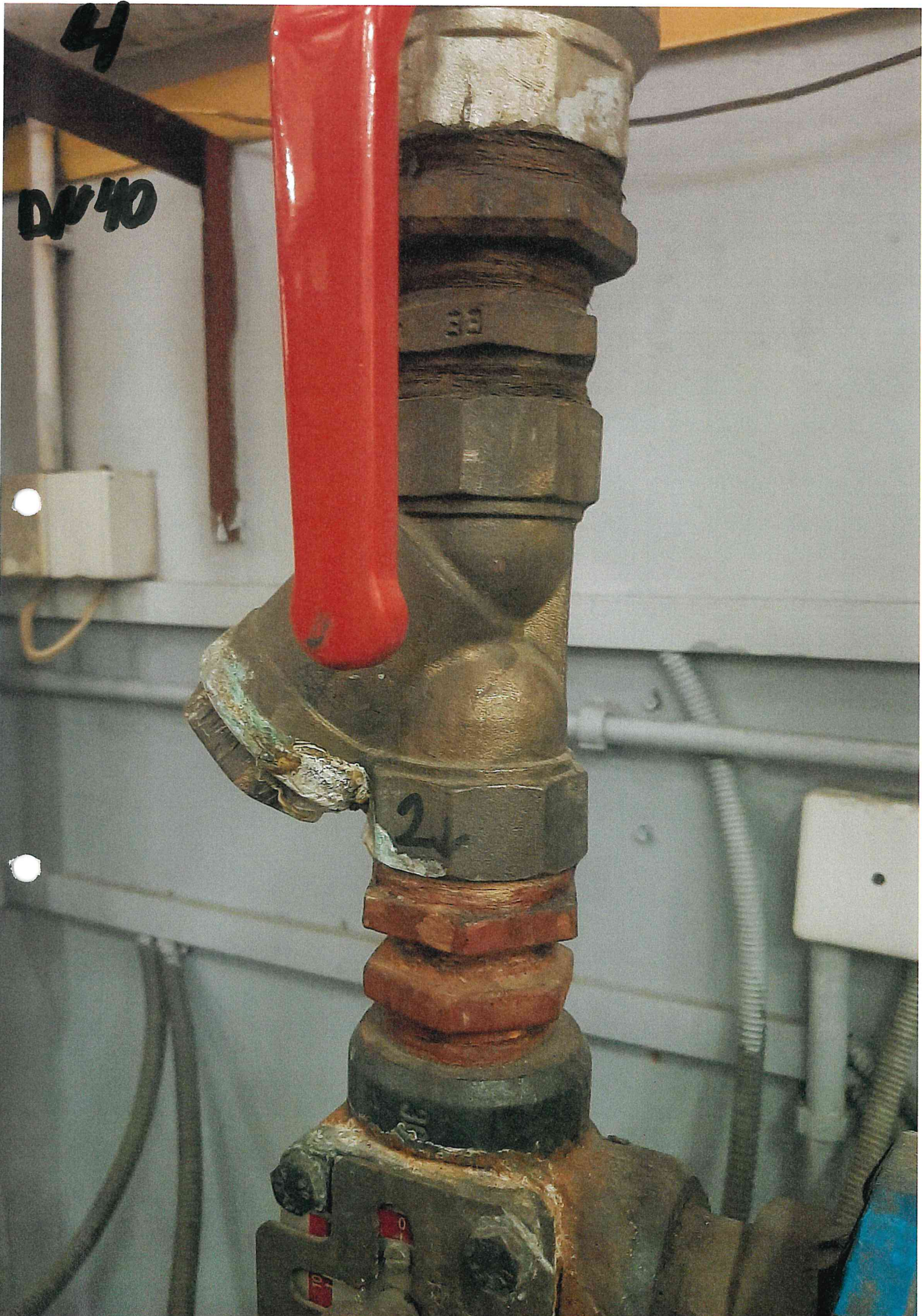
R

L

BUBBERK

~ (24V)





4

DN 40

2

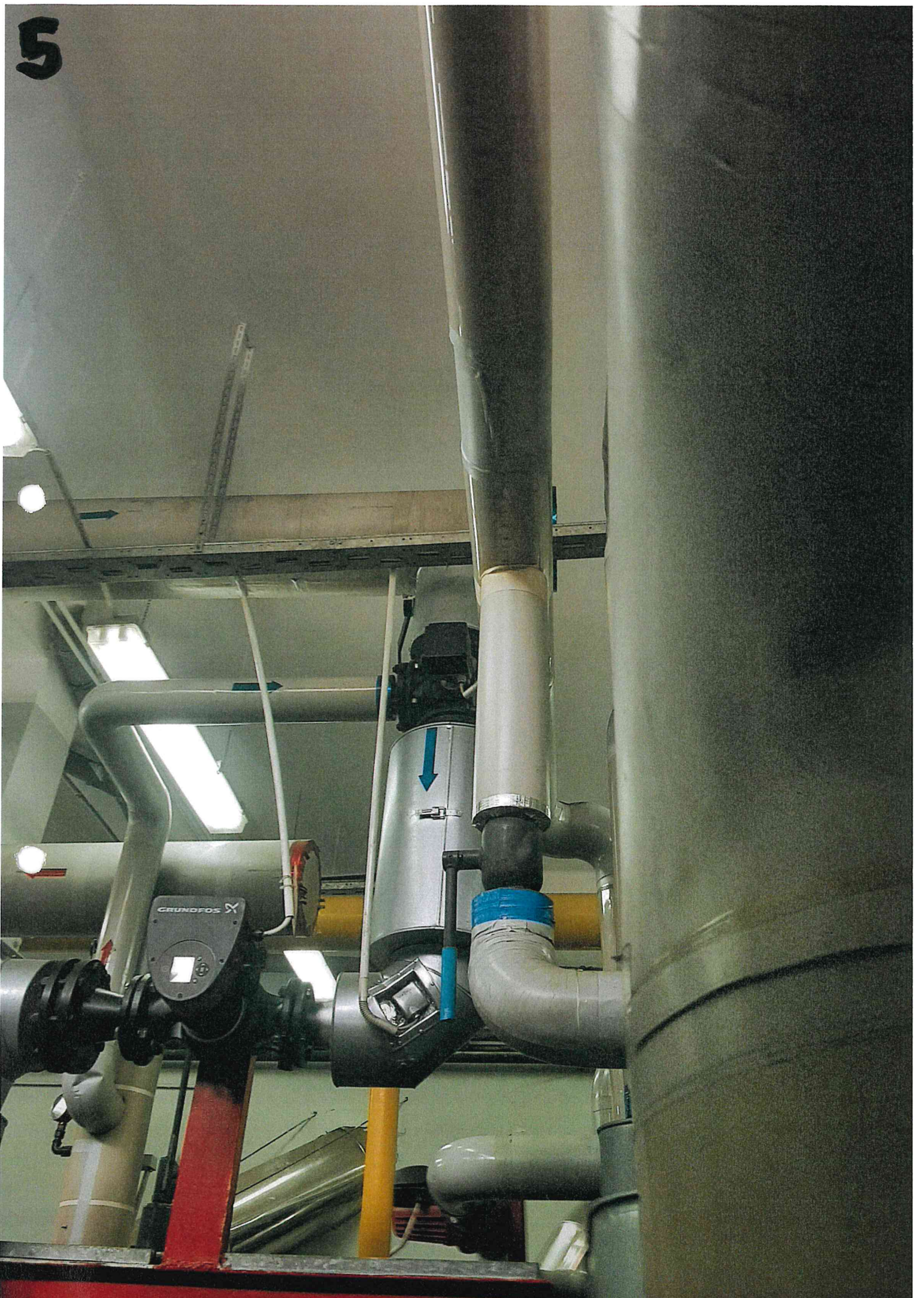


4-DN65





5





6

PLATE  
FRONT OF MONUMENT  
BY [illegible] [illegible]



6



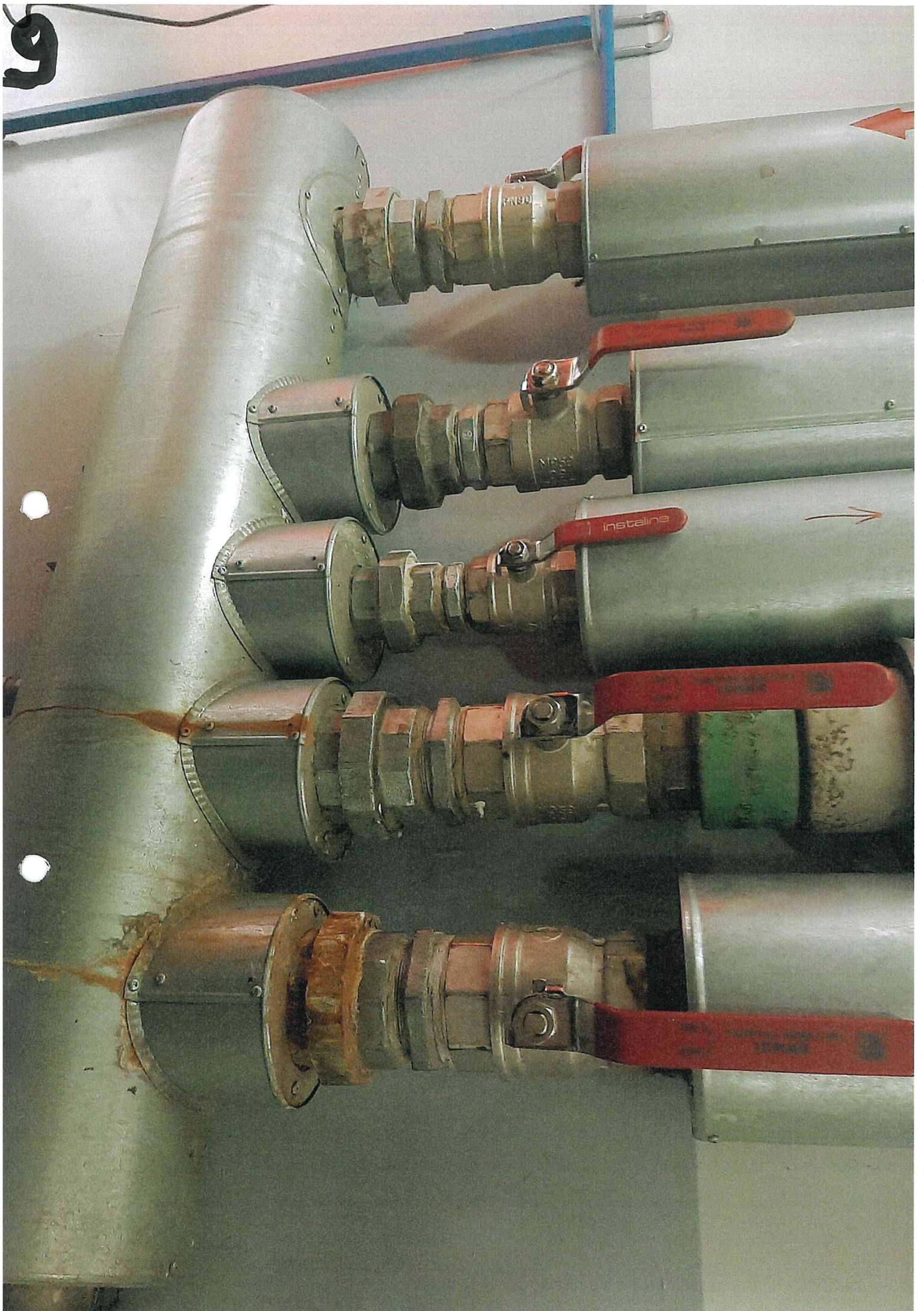












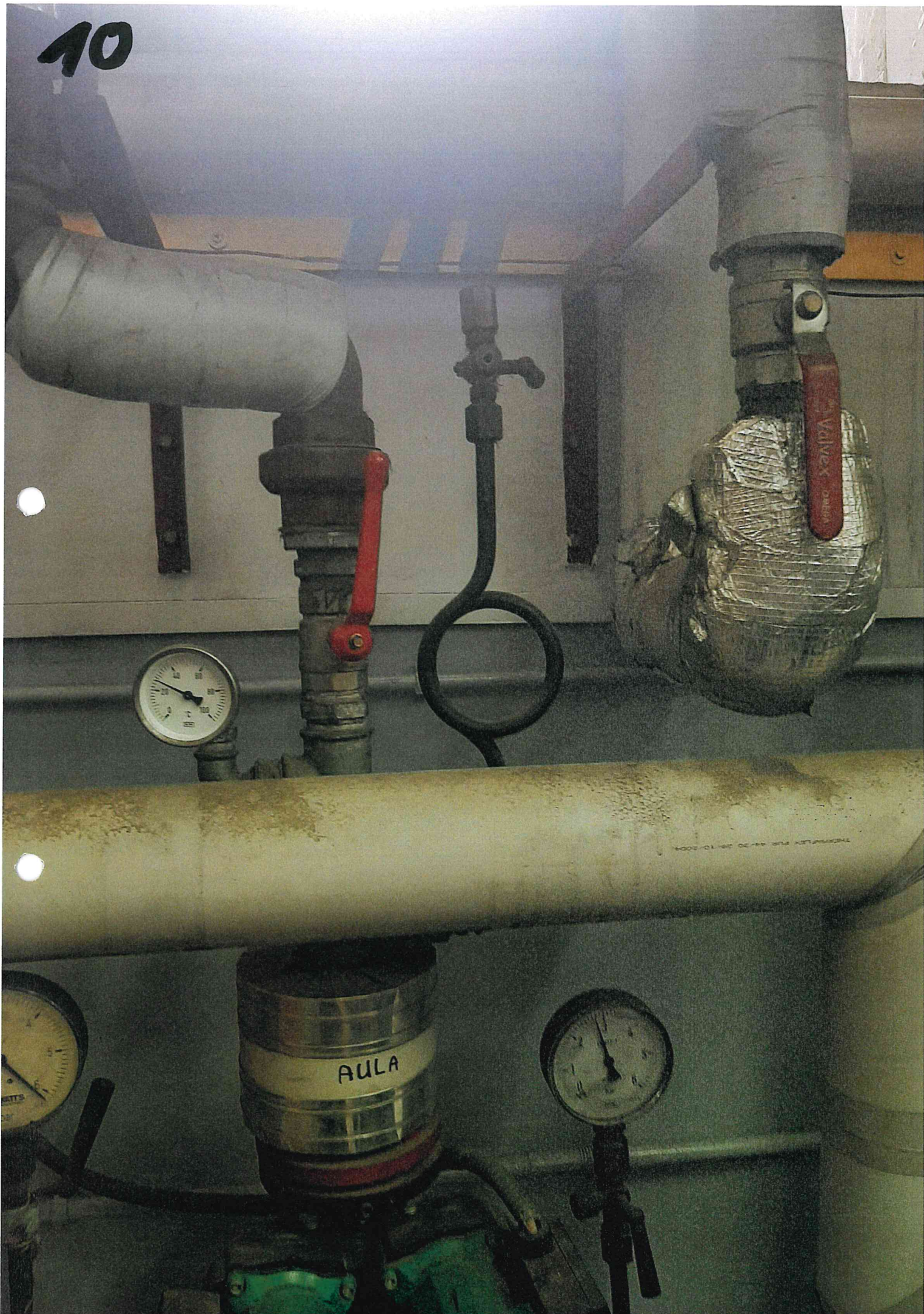


10

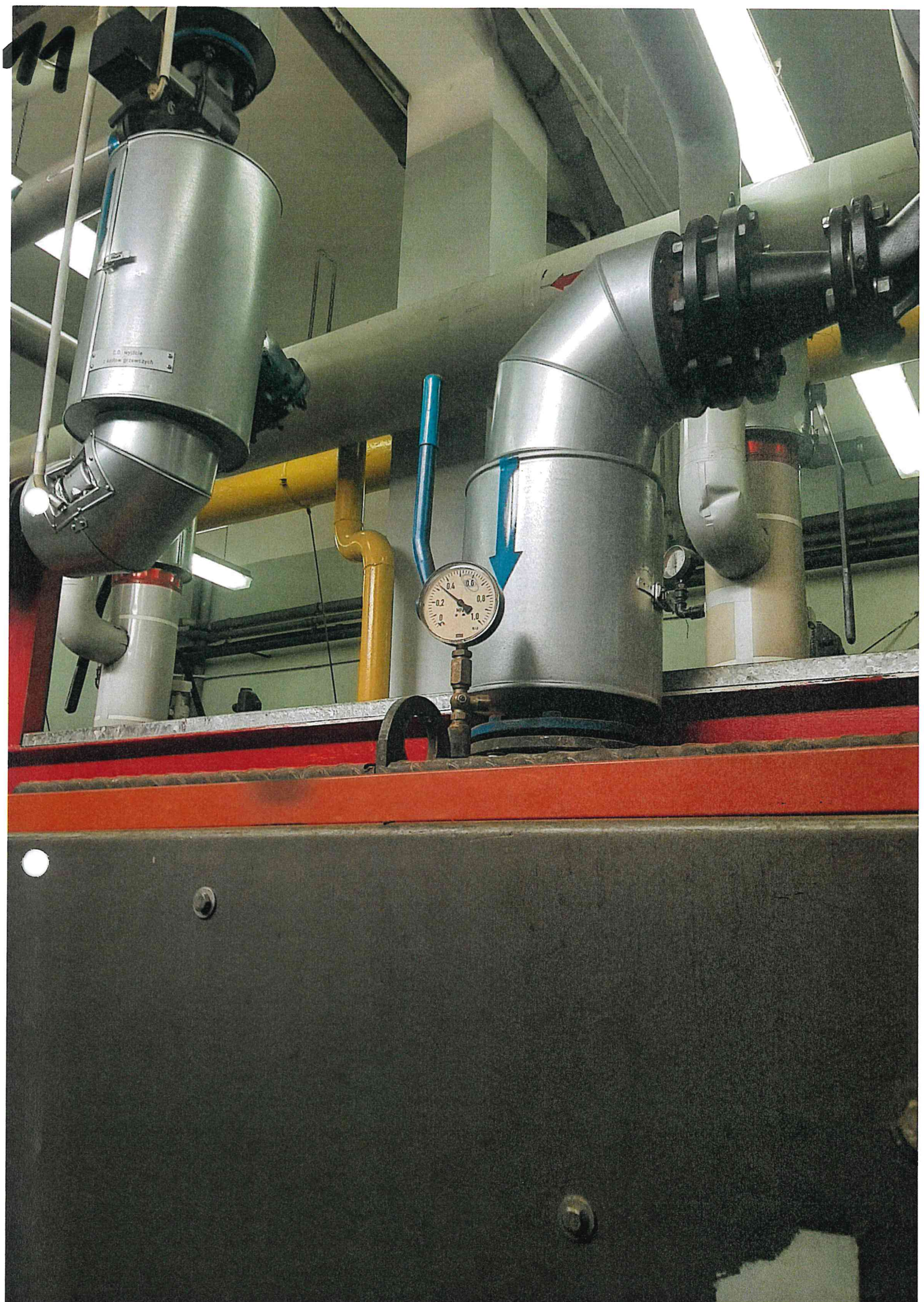




40







11

0.0 wyście  
z punktu grzewczego



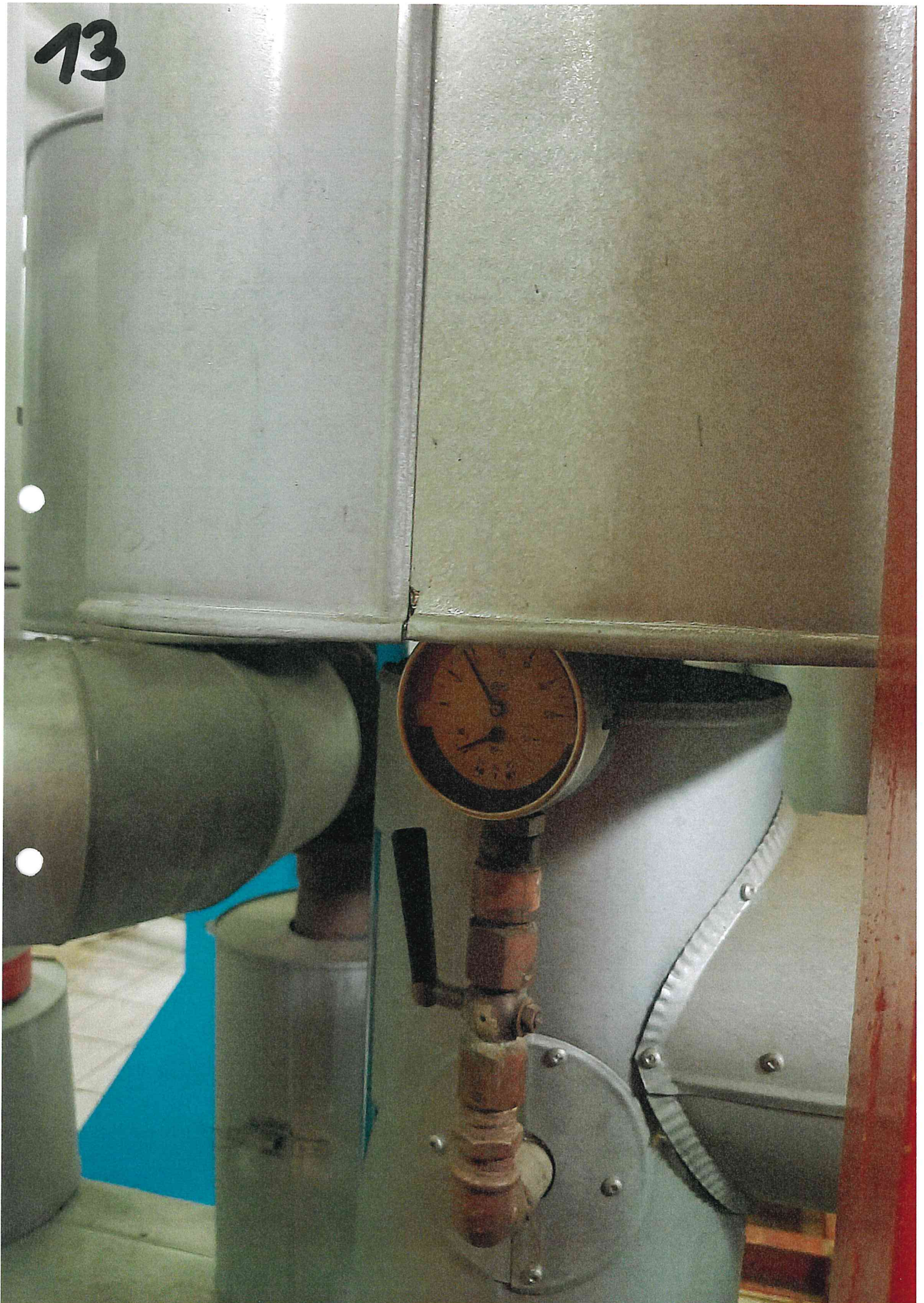


12





13





15



A1

LANDIS & GYR

LFL1.322

220-240V~

Serie 02

50-60Hz 3,5VA

tv 36s

Ø 4A; Ø... Ø total 5A

ts max. 2s (2s)/2s



Rg. 5F091/95

CE-0085AP0001



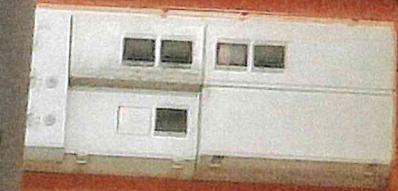
Made in Germany



0009280268



16



ANN  
Simplex





17





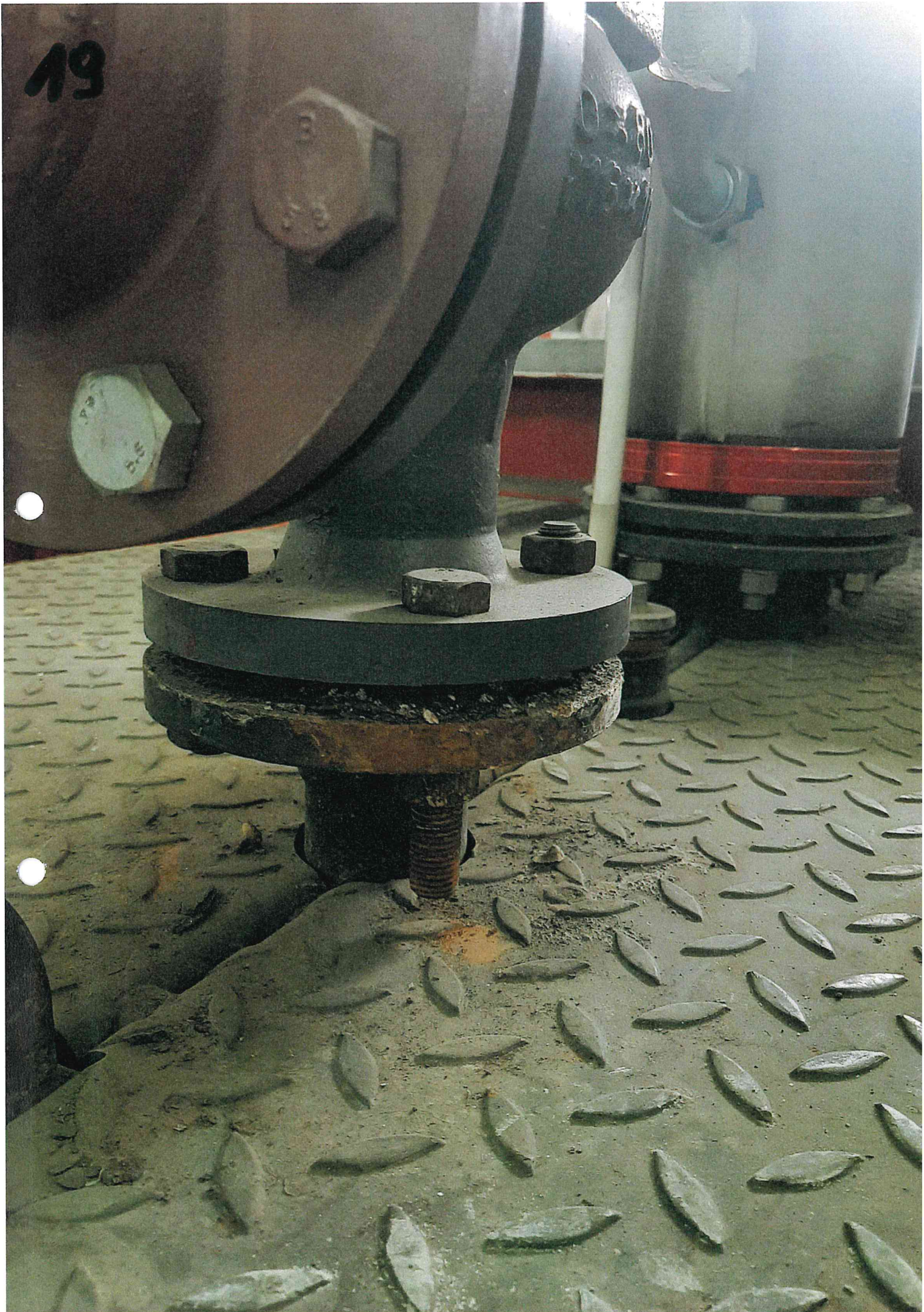








19





20





21





22

