

Duża sala konferencyjna

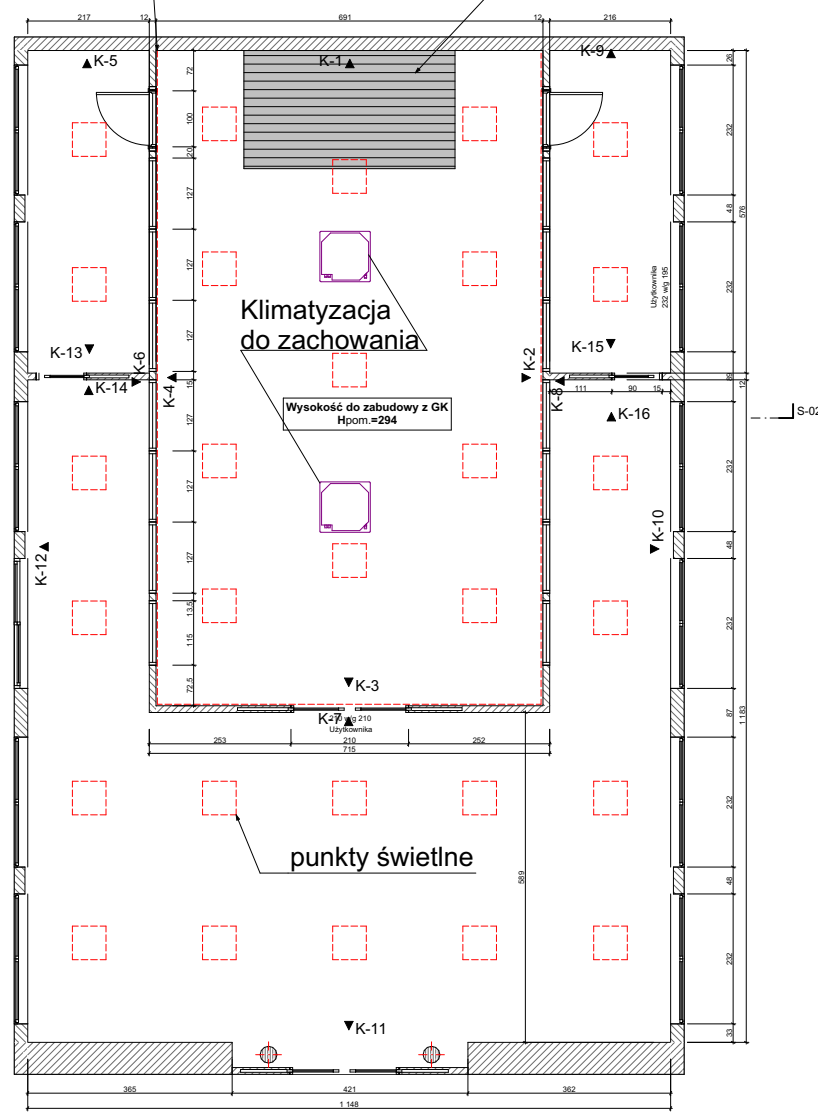
Pasek LED prowadzony po obwodzie sali

Podest do likwidacji

Klimatyzacja do zachowania

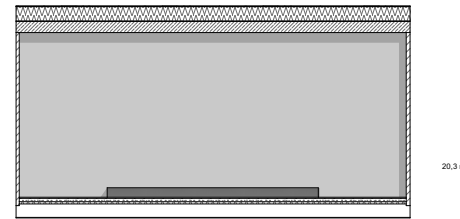
Wysokość do zabudowy z GK
H_{pom.} = 294

punkty świetlne

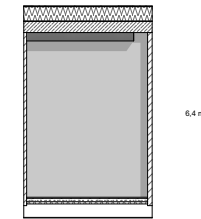


**Nad istniejącą zabudową sufitową z GK
przeźren około 140 cm wysokości**

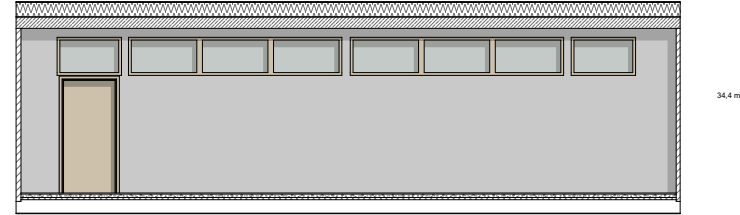
K-01



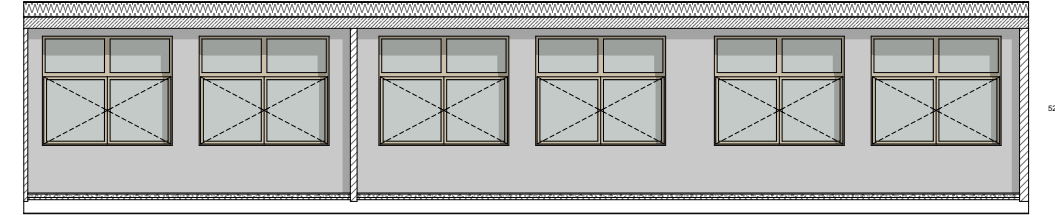
K-09



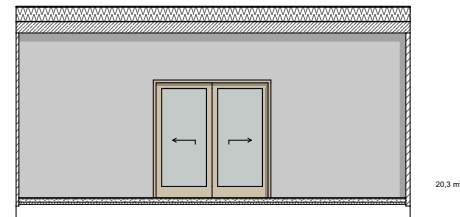
K-02



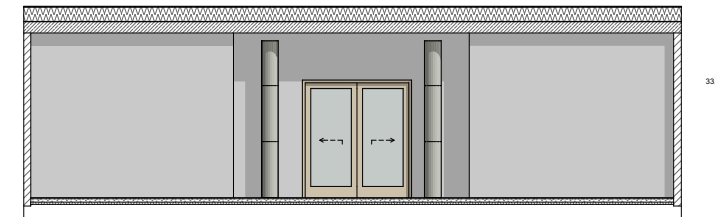
K-10



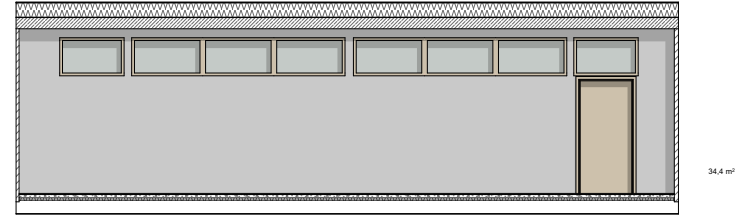
K-03



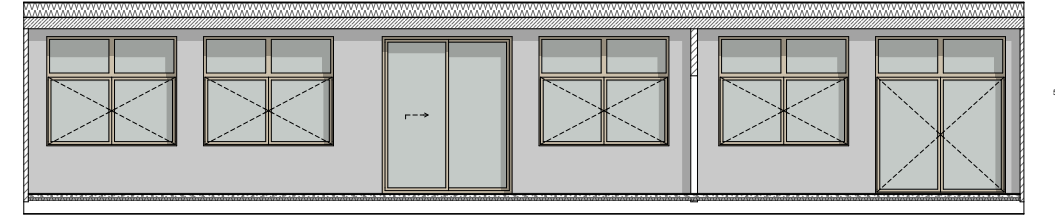
K-11



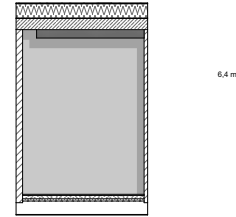
K-04



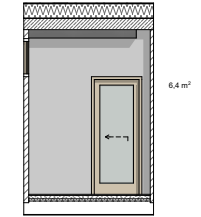
K-12



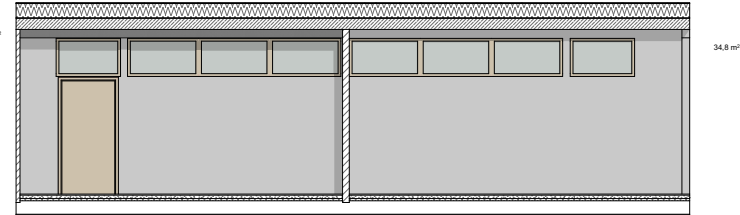
K-05



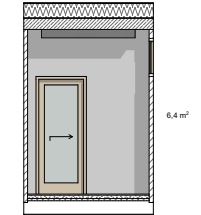
K-13



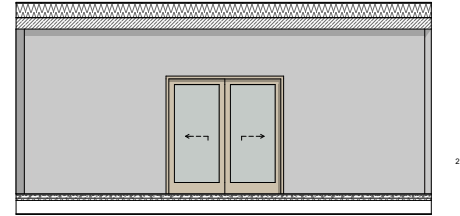
K-06



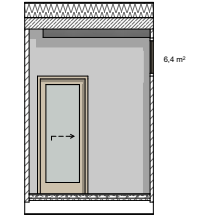
K-14



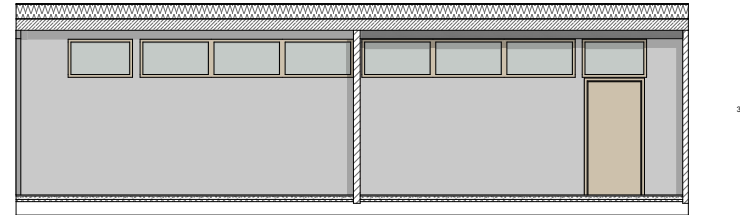
K-07



K-15



K-08



K-16

